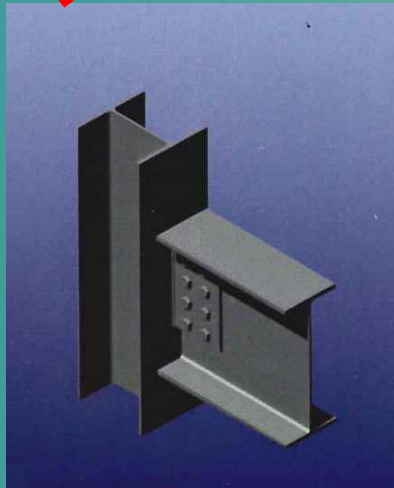




**UPDATED FOR 2018 DEVELOPMENTS**



Dr Peter Key

## Design of Structural Steel Bolted Connections

The recent growth in steel framed buildings and similar structures in Australia has been nothing short of astounding. Improved speed of construction, offsite fabrication and attention to cost efficiencies have all added to excellent steel outcomes.

The flexibility for site assembly and fabrication efficiencies developed through the use of bolted connections are a significant component of steel's renaissance as a building material of choice with CNC beam lining and profile cutting rapidly contributing to more cost efficient connections.

**This seminar will establish the solutions possible through pragmatic standardised connection design and explain the cost efficiencies of bolted connections. A particular focus on design and installation to realise this efficiency and provide safe, structurally sound designs underpins the seminar.**

A thorough understanding of connection design and cost efficiencies is a fundamental component of your continuing professional development in structural steel design, important to transfer into your business environment and a significant differentiator for your organisation when discussing steel solutions with your clients.

### Times

**12.00pm for 12.30pm start to 5.00pm finish**

### Seminar Package

**Light lunch on arrival**

**Afternoon tea**

### Seminar Content

Introduction; bolt strength fundamentals; AS 4100/AS/NZS 1252 context; bolted connection design models; economical design and detailing; recent developments; compliance.

### Presenter

**Dr Peter Key** is the National Technical Development Manager for the ASI. He is the author of a range of technical publications including the *Structural Steelwork Fabrication and Erection Code of Practice* which preceded *AS/NZS 5131:2016 Structural steelwork – Fabrication and erection*. Peter is a member of the Standards Australia Committee ME-029 which is responsible for a range of fastener standards, including AS/NZS 1252 and is a regular presenter for ASI on steel design and construction aspects.

### Seminar Fee (incl GST)

**\$375 ASI Member**

**\$455 EA Member**

**\$535 Non-Member**

**Engineers Australia (EA) Members who are not ASI members** should email

[margritc@steel.org.au](mailto:margritc@steel.org.au) with current proof of membership to obtain the promotion code to access the EA Member reduced fee.

### Book Offer

Seminar attendees are able to purchase the ASI Structural Steel Connections Series of books at a discounted price. For further details, please email [margritc@steel.org.au](mailto:margritc@steel.org.au)

<b>Brisbane</b>	Tuesday 29 May	Brisbane Convention & Exhibition Centre, corner of Merivale and Glenelg Streets, South Brisbane
<b>Sydney</b>	Wednesday 30 May	Vibe Hotel North Sydney, 171 Pacific Highway, North Sydney
<b>Melbourne</b>	Thursday 31 May	Amora Hotel Riverwalk Melbourne, 649 Bridge Road, Richmond
<b>Adelaide</b>	Tuesday 5 June	Peppers Waymouth Hotel, 55 Waymouth Street, Adelaide
<b>Perth</b>	Wednesday 6 June	Geographe Room, State Library of WA, 25 Francis Street, Perth Cultural Centre, Perth

Register online at: <http://steel.org.au/events/asi-events>

For further details, contact: John Gardner, National Education Manager, Technical

Phone: (07) 38535320 Email: [johng@steel.org.au](mailto:johng@steel.org.au) Web: [www.steel.org.au](http://www.steel.org.au)